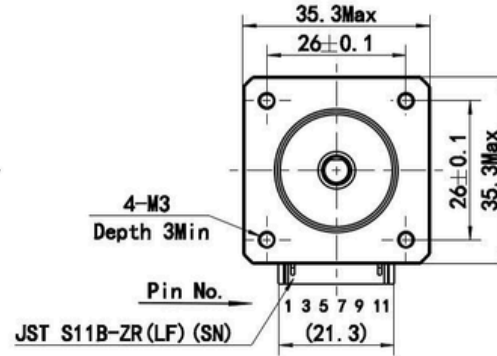
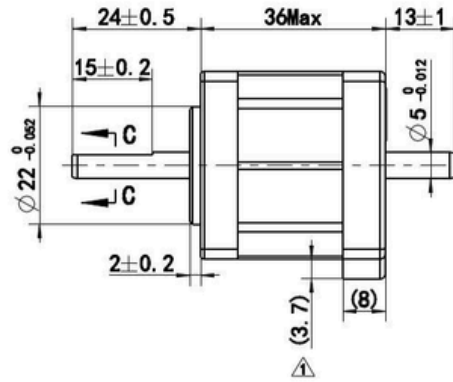
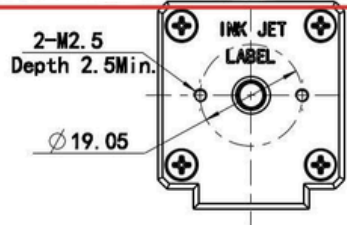
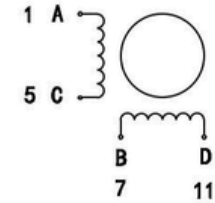


Controlled document
Pivexin Technology Sp. z o.o.



Wiring Diagram

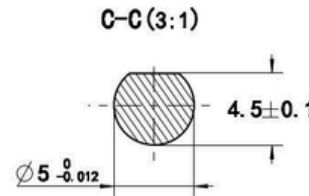


Exciting Sequence vs. Direction of Rotation

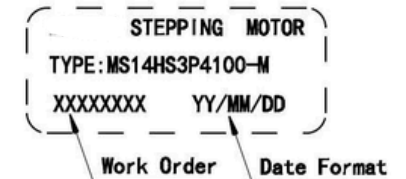
STEP	A	B	C	D	CCW
1	+	+	-	-	↑
2	-	+	+	-	
3	-	-	+	+	
4	+	-	-	+	

Clockwise view from mounting side

1. Number of Phase	2
2. Step Angle	1.8°
3. Rated Voltage	3.4 V DC
4. Rated Current	1 Amp
5. Holding Torque	0.23 Nm Typ. (Two phase on/rated current)
6. Phase Resistance	3.4 ohm±10% (20°C)
7. Phase Inductance	5 mH±20%(1kHz 1V rms)
8. Rotor Inertia	20 gcm ²
9. Motor Weight	0.21 kg
10. Insulation Class	B (130°C)



Label Detail



			Unit:mm							
			First angle method							
			Tolerances for linear and angular dimensions without individual tolerance indications GB/T 1804-m eqv ISO 2768-1:m							
			Geometrical tolerance for features without individual tolerance indications GB/T 1184-K eqv ISO 2768-2:K							
A1	ECR:23-879, There are one positions	2023.06.08								
A0	Original revision	2017.09.21								
REV.	REVISION RECORD	DATE	UNLESS OTHERWISE SPECIFIED	NAMES	SIGNATURE	DATE	Drawing No: 4611110027597	Rev. A1	SCALE: 1:1	Sheet 1 of 1

PIVEXIN TECHNOLOGY